

(

5

(1)

2

3 4

1

1.

2

7.

8. / / / /

 /

9.

10.

11.

12.

13.

:

,

14.

1.

2.

40%

60%

3.

1.

2.

5%

3.

1

2

3

4

5

60

20

5

0.2

0.2

0.5

0.5

0.8

0.8

6

7

1

1

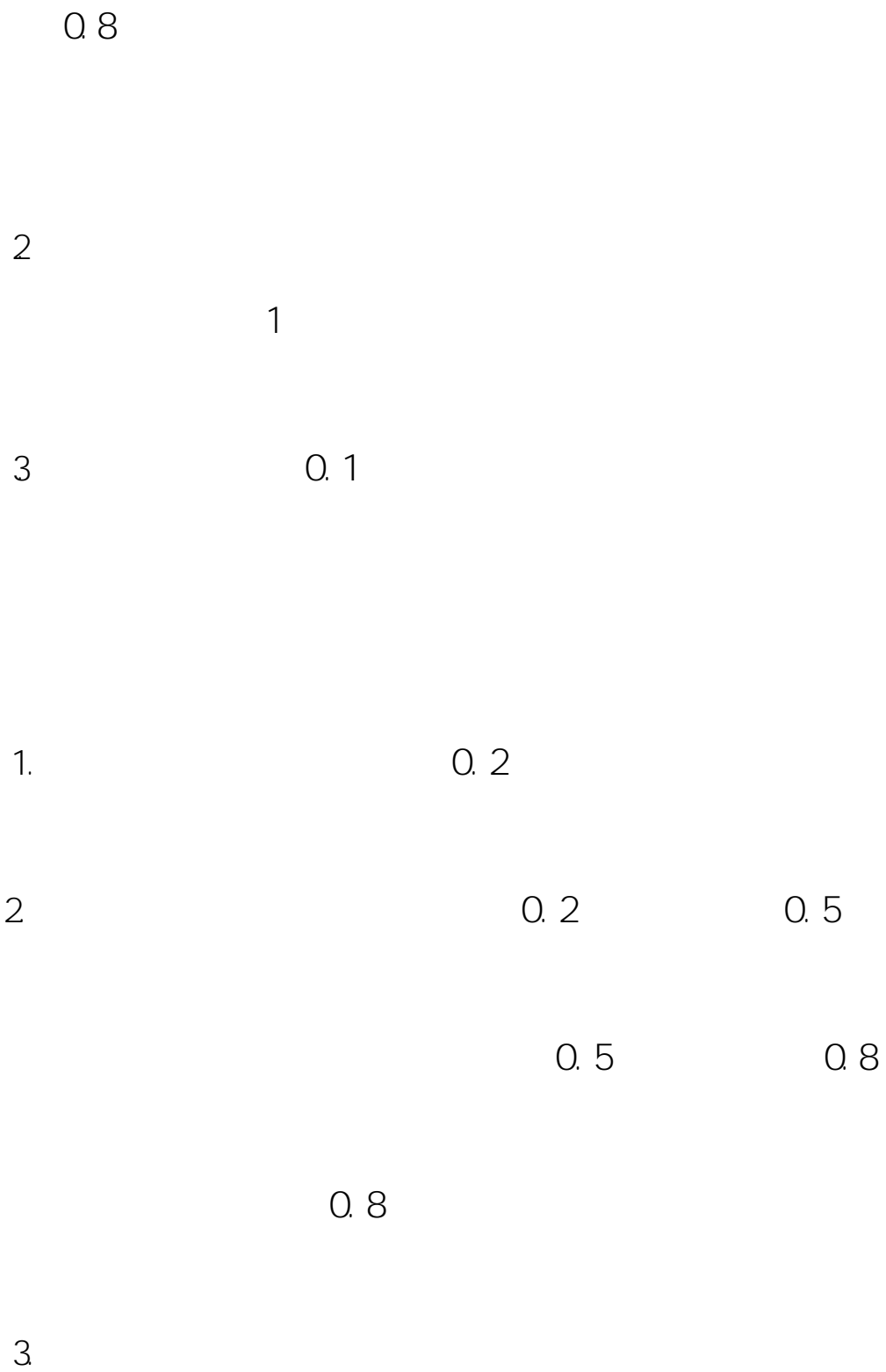
0.2

0.2

0.5

0.5

0.8



8

(

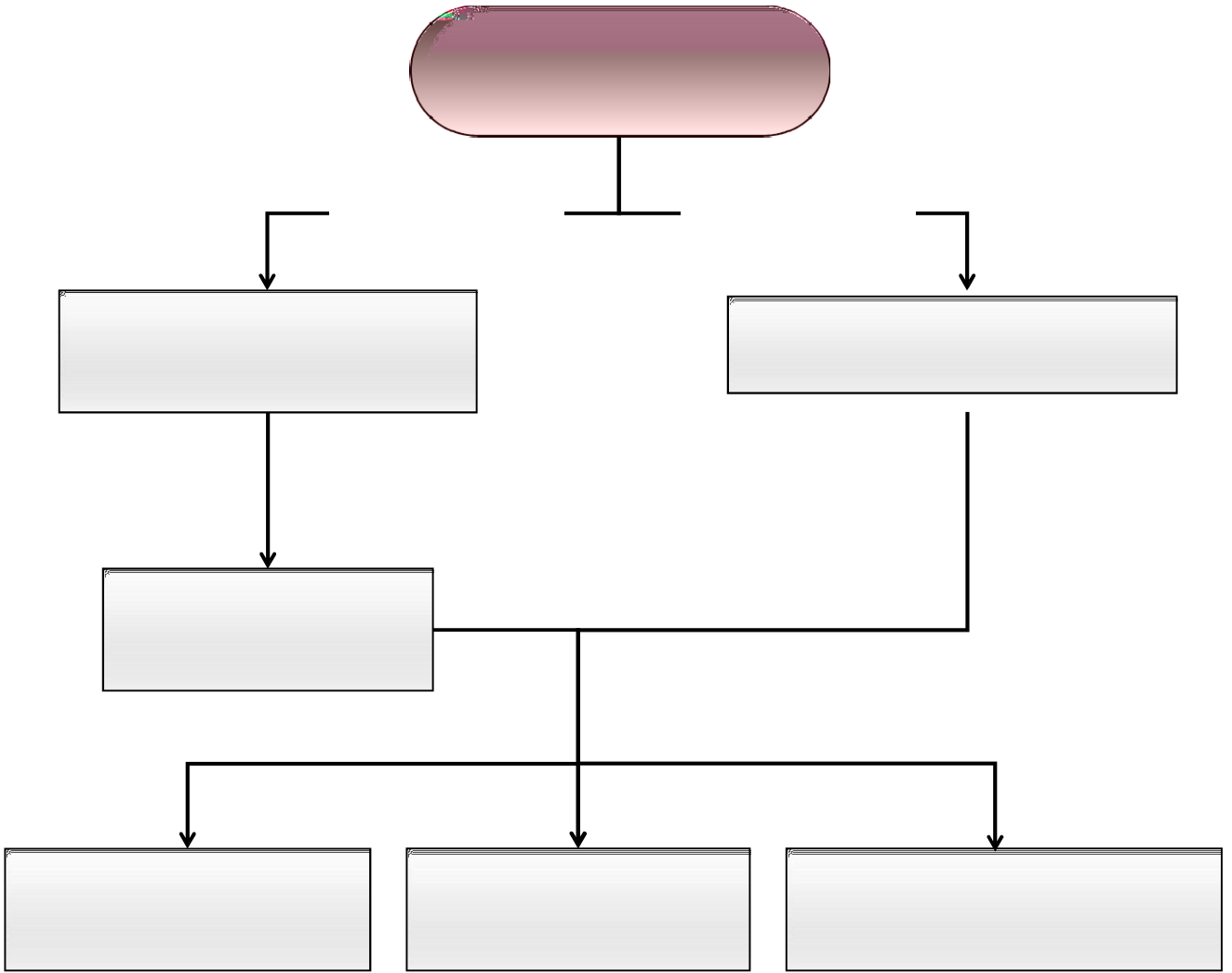
)

9

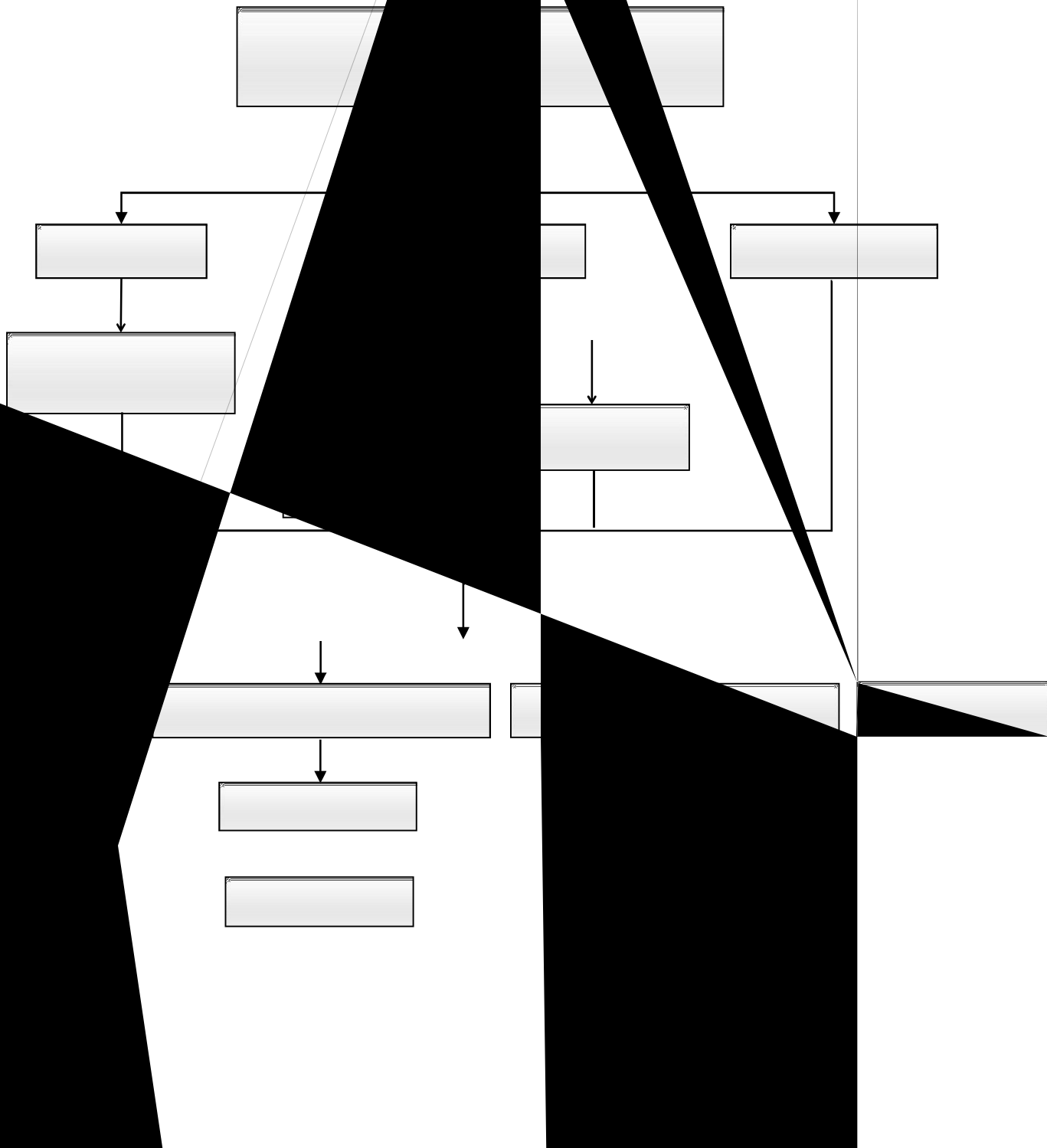
50

10

1



3



1									
2									
3									
4									
5									
								20	
								20	
								20	
								20	

